

**Using Instruction  
Conrepu**





1.

Grind the repair area and remove any impurities.

Grinding disc: 24 grit  
Revolutions per minute: 800 - 2400



2.

Apply a thin coat of cold bonding cement (Conti Secur BFA).

Drying time at least 20 min. at room temperature.



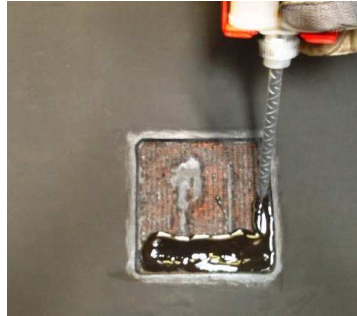
3.

In order to equalize the position of the Conrepu cartridge please press it gently without the nozzle.



3.

Screw the nozzle onto the cartridge.  
To get a 100 % mixing effect do not use the first bit of mixture.



4.

Fill the area without interruption with Conrepu.

Don't stop during the process as it reacts immediately and becomes hardened whereby you must replace the nozzle.



5.

After hardening (at least 30 min. at room temperature) you can grind the repaired area.

Grinding disc: 24 grit

Revolutions per minute: < 1000 rpm



example of finished repair area.