

Conveyor Belt Group

ContiTech  
Service Material

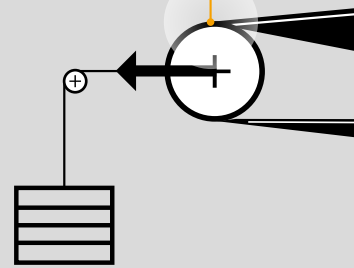


# ContiTech Service Material



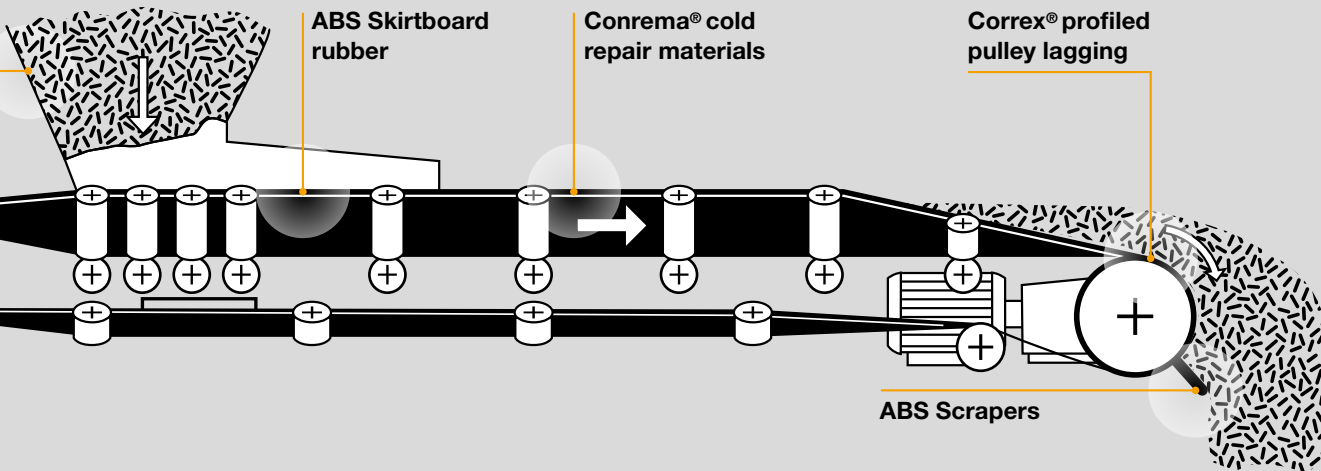
**Correx® wear resistant material**

**Correx® smooth pulley lagging**



## ContiTech Conveyor Belt Group

Global competition and technological change are challenges we take up as manufacturers of conveyor belt systems. In this function we are helped by our inhouse and worldwide networking that generates valuable synergies. Our capability to innovate, our use of the latest technologies and our comprehensive customer-oriented services mean we are in demand as a partner to the mining and engineering industries and to many other sectors throughout the world. As a company of the ContiTech Division we are part of Continental AG, so we benefit from its financial strength and synergy potential.



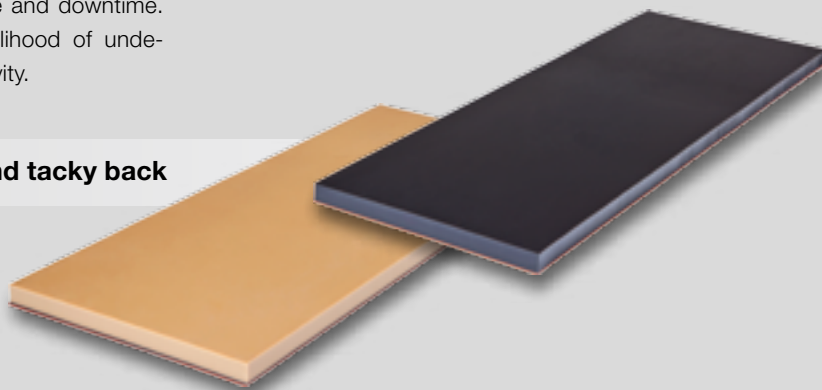
## System Protection

System surfaces are subject to corrosion and wear. This is an undesirable surface change and leads to reduced service time and costs for maintenance and downtime. Correx pulley lagging reduces the likelihood of undesirable changes and enhances productivity.

### Correx® with smooth surface and tacky back

#### Application

- ▶ Pulley lagging for non driven pulleys
- ▶ Abrasion resistant lining
- ▶ Corrosion resistant lining



Standard range	Length m	Width mm	Thickness mm	Shore Hardness Shore A
Extra	10	1200* / 2000	4* - 20	60
Hard	5	1200	10 - 12	90
TRB	10	2000	12 - 15	65
Beige	10	2000	10 - 12	40
Blue	10	1200* / 2000	4* - 12	45



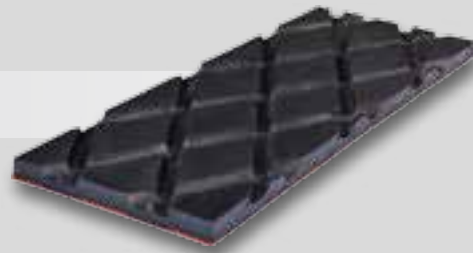
## Force Transmission

To improve the coefficient of friction between the conveyor belt and the drive pulley and to strengthen friction grip even under unfavorable drive ratios – such as, for example, dampness or contamination – the pulleys are lagged with profiled rubber or ceramic.

### Correx® with large diamond profile

#### Application

- Pulley lagging for drive pulleys
- Profile depth: 6 mm



Standard range	Length m	Width mm	Thickness mm	Shore Hardness Shore A
Extra	10	2000	10 – 20	60
TRB	10	2000	15 – 20	65
FR*	10	2000	12	60

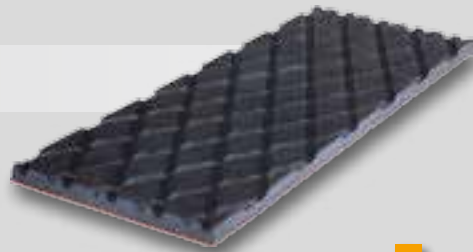


\* means Flame retardent

### Correx® with mini diamond profile

#### Application

- Pulley lagging for drive pulleys
- Profile depth: 4 mm



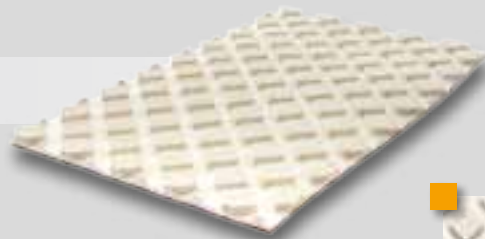
Standard range	Length m	Width mm	Thickness mm	Shore Hardness Shore A
Trans Correx	10	2000	6 – 10	60
X 65	10	1300	10	65



### Correx® square diamond profile

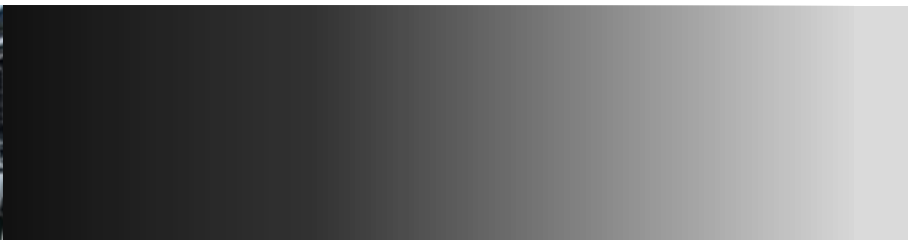
#### Application

- Pulley lagging for drive pulleys
- Profile height: 5 mm



Standard range	Length m	Width mm	Thickness mm	Shore Hardness Shore A
White	5	1300	8	55





## Correx® with studded pattern profile

### Application

- ▶ Pulley lagging for drive pulleys
- ▶ Profile height: 5 mm



Standard range	Length m	Width mm	Thickness mm	Shore Hardness Shore A
Soft 50	10	1300	10	50

## Belt maintenance

The serviceability and service life of a conveyor belt depends on the servicing and maintenance of the system and its conveyor belt. Downtime is costly and must be held to a minimum in case of repairs. Conrema® cold repair material makes it possible to do this.



## Conrema® Repair Material

### Application

- ▶ Cold repair of fabric ply – and steel cord belt

Standard range	Length m	Width mm	Thickness mm	Comment/Type
Conrema Repair Bands	10	50 up to 300	2.0	
Conrema Repair Bands fabric reinforced	10	100 up to 300	4.0	
Conrema Repair Material (cut edges)	5 5	500 500	approx. 1.5 approx. 3.0	Tacky back one side Tacky back one side
Conrema Repair Material (cut edges)	5	500	approx. 1.5	Tacky back both sides
Conrema Repair Material (cut edges)	5	500	approx. 3.0	Tacky back both sides
Conrema Filler Rubber	10	1200	0.8	Tacky back
Conrema Repair Fabric EP160	10	1200	1.8	



## Cold bonding solutions and solvents

Up to date in conveyor technology is to employ cold bonding with industrial-/contact adhesives for certain work instead of hot vulcanization, as was previously the case. This saves time and money and can be applied in many areas.

### Conti Secur BFA / Activator

#### BFA / black / white, 2 components bonding solution

##### Application

- Rubber Metal Bonding
- Rubber > Rubber Bonding
- Cold splice of fabric ply belts

#### Activator RE / RFE

##### Application

- Activating of the process



Standard range	0.5 l	0.8 l	4.8 l	22.2 l	200 l
<b>Conti Secur BFA</b>	X	X	X	X	X
<b>Activator RE</b>	25 g / 24 glas bottles/carton	40 g / 12/30 glas bottles/carton		750 g / Aluminum bottle	
<b>Conti Secur BFA white</b>		X		X	
<b>Activator RFE</b>		40 g / 12 glas bottles/carton			



### Conti Plus

#### Metal primer for rubber-metal-bonding

The bonding agent enhances adhesion/cohesion strength between the rubber lagging to be applied and the metal surface. It hinders corrosion in the case of primed metal surfaces in storage for a longer time.

##### Application

- Metal primer for rubber-metal-bonding
- Temporary corrosion prevention for primed metal surfaces
- Standard range: 0.75 l tin





## Conti RCE Cleaning solvent

### Application

- ▷ Solvent for cleaning rubber and metal surfaces
- ▷ Standard range 1.0 l tin



## Cleaning the belt

### Elastomer sheeting / Scraper rubber

ABS material with smooth surface and without tacky back

### Application

- ▷ Scraper rubber
- ▷ Gaskets rubber
- ▷ Blankets
- ▷ Skirtboard rubber



Standard range	Length m	Width mm	Thickness mm	Shore Hardness Shore A
Extra	10	2000	6 – 20	60
50	10	1200	6 – 10	50
Blue	10	1200	6 – 8	45
Beige	10	1200	6 – 8	40

Combi Scraper	Length m	Width mm	Thickness mm	Shore Hardness Shore A
Combi Scraper	10	1200	20	60/45/60



[www.contitech.de](http://www.contitech.de)  
[www.contitech-online.com](http://www.contitech-online.com)



#### Conveyor Belt Group

Market segment  
Industry

Contact  
ContiTech  
Transportbandsysteme GmbH  
D-37154 Northeim, Germany

Phone +49 5551 702-1628  
[transportbandsysteme@cbg.contitech.de](mailto:transportbandsysteme@cbg.contitech.de)

Your local contact

• [www.contitech.de/contactlocator](http://www.contitech.de/contactlocator)

The ContiTech division of the Continental Corporation is a development partner and original equipment supplier to numerous industries for high-quality functional parts, components and systems. With its know-how in rubber and plastics technology, ContiTech contributes significantly to industrial progress and mobility that is safe, comfortable and eco-friendly.

The content of this publication is not legally binding and is provided as information only. The trademarks displayed in this publication are the property of Continental AG and/or its affiliates. Copyright © 2011 ContiTech AG. All rights reserved. For complete information go to: [www.contitech.de/disc\\_en](http://www.contitech.de/disc_en)